

# ILLINOIS GAMING BOARD

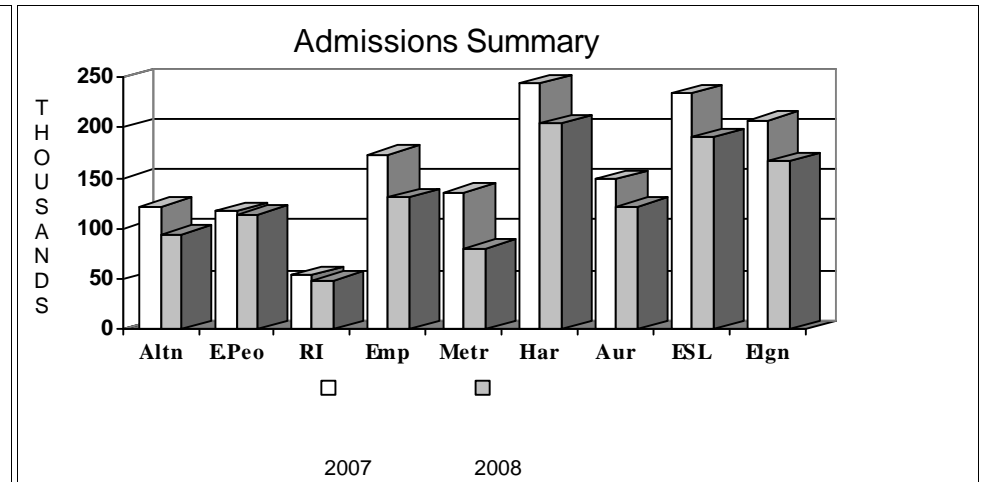
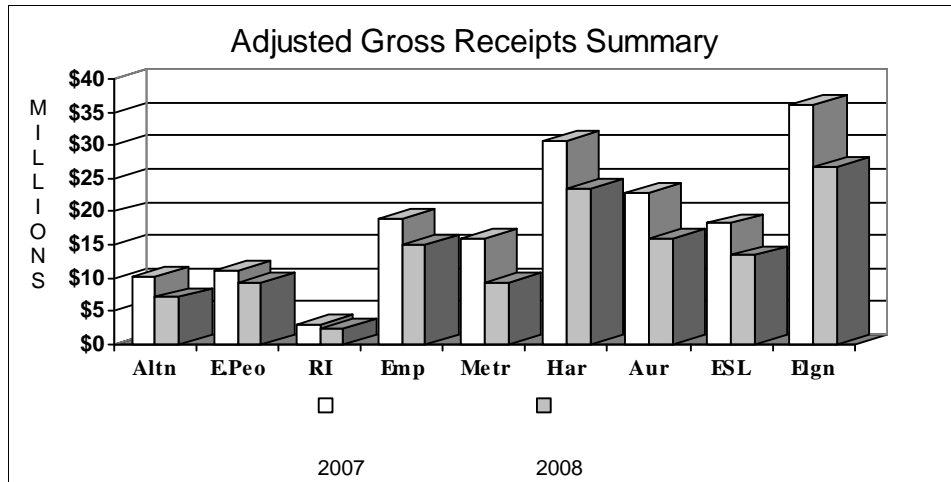
## Monthly Riverboat Casino Report

**September, 2008**

Docksite	Adjusted Gross Receipts (AGR) (000's)	Casino Square Feet	Admissions	AGR Per Square Foot	AGR Per Admission	Tax Allocations (000's) Adm Tax + Wagering Tax	
						State Share	Local Share
Alton	\$7,072	23,000	94,696	\$307	\$75	\$1,781	\$448
East Peoria	\$9,429	26,116	113,635	\$361	\$83	\$2,820	\$585
Rock Island	\$2,462	17,200	48,965	\$143	\$50	\$295	\$172
Joliet - Empress	\$14,996	50,000	130,804	\$300	\$115	\$5,135	\$881
Metropolis	\$9,276	30,985	80,912	\$299	\$115	\$2,713	\$545
Joliet - Harrah's	\$23,407	39,000	204,126	\$600	\$115	\$10,942	\$1,374
Aurora	\$16,028	41,384	122,229	\$387	\$131	\$6,656	\$924
E St Louis	\$13,400	40,000	189,897	\$335	\$71	\$4,735	\$860
Elgin	\$26,722	29,850	166,879	\$895	\$160	\$12,359	\$1,503
<b>Totals</b>	<b>\$122,793</b>	<b>297,535</b>	<b>1,152,143</b>	<b>\$413</b>	<b>\$107</b>	<b>\$47,435</b>	<b>\$7,292</b>

**NOTE** - On August 23, 2005 new admission tax rates became effective.

- Local Share = \$1 of the admission tax plus a portion of the wagering tax equal to 5% of the AGR
- State Share = the balance of the admission and wagering taxes.

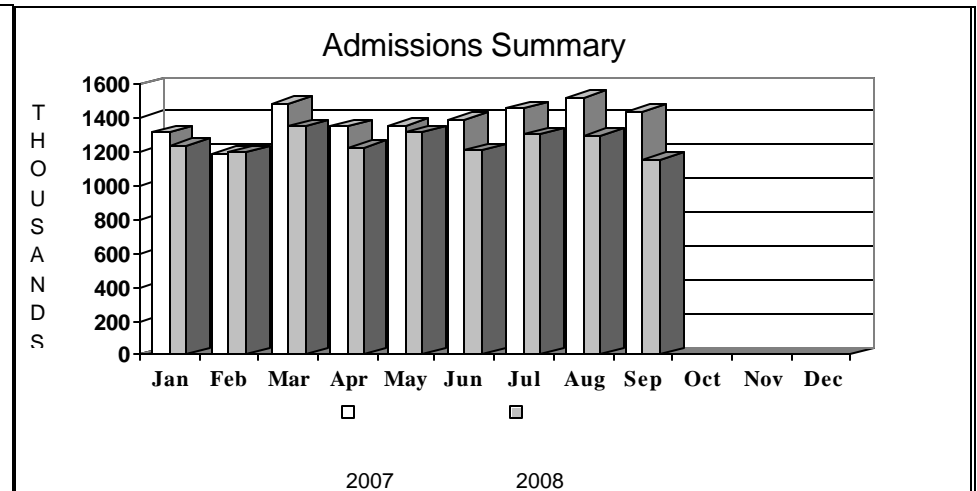
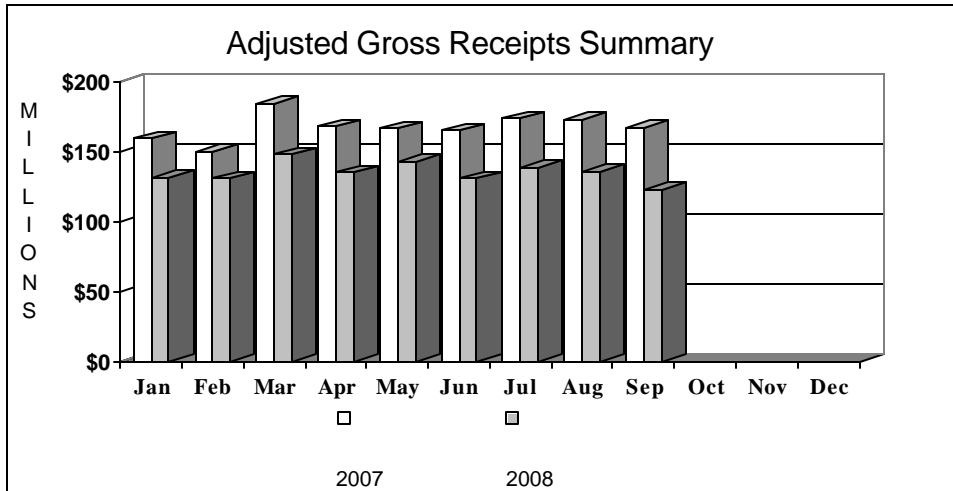


# ILLINOIS GAMING BOARD

## Monthly Riverboat Casino Report

Calendar Year-To-Date Through September, 2008

Docksite	Adjusted Gross Receipts (AGR) (000's)	Casino Square Feet	Admissions	AGR Per Square Foot	AGR Per Admission	Tax Allocations (000's)	
						State Share	Local Share
Alton	\$70,484	23,000	913,795	\$3,065	\$77	\$13,311	\$4,438
East Peoria	\$89,625	26,116	1,037,171	\$3,432	\$86	\$18,596	\$5,518
Rock Island	\$24,232	17,200	458,567	\$1,409	\$53	\$2,882	\$1,670
Joliet - Empress	\$144,176	50,000	1,323,971	\$2,884	\$109	\$36,380	\$8,533
Metropolis	\$97,115	30,985	825,924	\$3,134	\$118	\$20,234	\$5,682
Joliet - Harrah's	\$232,819	39,000	1,996,630	\$5,970	\$117	\$74,387	\$13,638
Aurora	\$170,011	41,384	1,261,180	\$4,108	\$135	\$46,152	\$9,762
E St Louis	\$123,465	40,000	1,762,577	\$3,087	\$70	\$30,526	\$7,936
Elgin	\$263,365	29,850	1,700,575	\$8,823	\$155	\$87,540	\$14,869
<b>Totals</b>	<b>\$1,215,291</b>	<b>297,535</b>	<b>11,280,390</b>	<b>\$4,085</b>	<b>\$108</b>	<b>\$330,008</b>	<b>\$72,045</b>



**NOTE** - On August 23, 2005 new admission tax rates became effective.  
 - Local Share = \$1 of the admission tax plus a portion of the wagering tax equal to 5% of the AGR  
 - State Share = the balance of the admission and wagering taxes.

# ILLINOIS GAMING BOARD

## Monthly Riverboat Casino Report

### September Comparison

AGR Comparison to Previous Month (000's)			
Docksite	Sep., 2008	Aug., 2008	% Change
Alton	\$7,072	\$7,814	-9.50%
East Peoria	\$9,429	\$10,313	-8.57%
Rock Island	\$2,462	\$2,753	-10.56%
Joliet - Empress	\$14,996	\$16,509	-9.17%
Metropolis	\$9,276	\$11,430	-18.85%
Joliet - Harrah's	\$23,407	\$25,816	-9.33%
Aurora	\$16,028	\$18,919	-15.28%
E St Louis	\$13,400	\$13,394	0.04%
Elgin	\$26,722	\$28,470	-6.14%
Totals	\$122,793	\$135,418	-9.32%

AGR Comparison to Same Month Last Year (000's)		
Sep., 2008	Sep., 2007	% Change
\$7,072	\$10,291	-31.28%
\$9,429	\$11,148	-15.42%
\$2,462	\$2,993	-17.73%
\$14,996	\$19,036	-21.22%
\$9,276	\$16,057	-42.23%
\$23,407	\$30,771	-23.93%
\$16,028	\$22,759	-29.58%
\$13,400	\$18,192	-26.34%
\$26,722	\$36,032	-25.84%
\$122,793	\$167,279	-26.59%

Admission Comparison to Previous Month *			
Docksite	Sep., 2008	Aug., 2008	% Change
Alton	94,696	104,218	-9.14%
East Peoria	113,635	126,019	-9.83%
Rock Island	48,965	54,572	-10.27%
Joliet - Empress	130,804	154,630	-15.41%
Metropolis	80,912	101,086	-19.96%
Joliet - Harrah's	204,126	220,196	-7.30%
Aurora	122,229	137,872	-11.35%
E St Louis	189,897	206,293	-7.95%
Elgin	166,879	193,026	-13.55%
Totals	1,152,143	1,297,912	-11.23%

Admission Comparison to Same Month Last Year *		
Sep., 2008	Sep., 2007	% Change
94,696	122,093	-22.44%
113,635	117,151	-3.00%
48,965	53,973	-9.28%
130,804	173,922	-24.79%
80,912	135,787	-40.41%
204,126	243,728	-16.25%
122,229	148,381	-17.62%
189,897	233,278	-18.60%
166,879	206,567	-19.21%
1,152,143	1,434,880	-19.70%

# ILLINOIS GAMING BOARD

## Statistical Summary

**August, 2008**

	Comparison to Previous Month			Comparison to Same Month Last Year			Cumulative Comparison - January - August		
	Aug., 2008	July, 2008	% Change	Aug., 2008	Aug., 2007	% Change	2008	2007	% Change
AGR (000)'s	\$135,488	\$138,317	-2.04%	\$135,488	\$172,263	-21.35%	\$1,092,316	\$1,337,801	-18.35%
# Of Table Games *	218	217	0.46%	218	216	0.93%	216	216	-0.29%
Table Drop (000)'s	\$98,345	\$105,447	-6.74%	\$98,345	\$115,509	-14.86%	\$823,008	\$893,831	-7.92%
Table AGR (000)'s	\$16,697	\$17,191	-2.87%	\$16,697	\$19,548	-14.58%	\$138,459	\$154,953	-10.64%
AGR Per Table Per Day	\$2,471	\$2,555	-3.32%	\$2,471	\$2,919	-15.37%	\$2,632	\$2,949	-10.76%
Table AGR %	16.98%	16.30%	4.14%	16.98%	16.92%	0.32%	16.82%	17.34%	-2.95%
# Of EGD's *	9,902	9,920	-0.18%	9,902	9,902	0.00%	9,929	9,953	-0.24%
EGD Handle (000)'s	\$1,571,683	\$1,602,068	-1.90%	\$1,571,683	\$2,086,008	-24.66%	\$12,687,490	\$16,376,954	-22.53%
EGD AGR (000)'s	\$118,791	\$121,126	-1.93%	\$118,791	\$152,715	-22.21%	\$953,857	\$1,182,848	-19.36%
AGR Per EGD Per Day	\$387	\$394	-1.75%	\$387	\$498	-22.21%	\$394	\$489	-19.50%
EGD AGR %	7.56%	7.56%	-0.03%	7.56%	7.32%	3.24%	7.52%	7.22%	4.09%
Admissions	1,297,912	1,302,176	-0.33%	1,297,912	1,517,363	-14.46%	10,128,247	11,054,452	-8.38%
Casino Square Feet	297,535	297,535	0.00%	297,535	285,035	4.39%	297,535	285,035	4.39%
AGR Per Admission	\$104.39	\$106.22	-1.72%	\$104.39	\$113.53	-8.05%	\$107.85	\$121.02	-10.88%
AGR Per Square Foot	\$455.37	\$464.87	-2.04%	\$455.37	\$604.36	-24.65%	\$3,671.21	\$4,693.46	-21.78%

\* Weighted Average

## Calendar Year-To-Date (000's)

<i>Docksite</i>	<i>Start Date</i>	<i>Table AGR</i>			<i>EGD AGR</i>		
		2008	2007	<i>% Change</i>	2008	2007	<i>% Change</i>
Alton	September 11, 1991	\$4,045	\$5,123	-21.05%	\$59,351	\$80,904	-26.64%
East Peoria	November 20, 1991	\$8,702	\$8,843	-1.60%	\$71,465	\$81,734	-12.56%
Rock Island	March 11, 1992	\$1,451	\$1,536	-5.51%	\$20,315	\$22,977	-11.59%
Joliet - Empress	June 17, 1992	\$14,129	\$15,827	-10.73%	\$115,054	\$149,948	-23.27%
Metropolis	February 23, 1993	\$12,862	\$14,017	-8.24%	\$74,948	\$98,538	-23.94%
Joliet - Harrah's	May 04, 1993	\$24,407	\$23,728	2.86%	\$184,979	\$234,050	-20.97%
Aurora	June 17, 1993	\$16,393	\$21,433	-23.52%	\$137,563	\$163,872	-16.05%
E St Louis	June 23, 1993	\$16,670	\$17,126	-2.67%	\$93,360	\$102,159	-8.61%
Elgin	October 06, 1994	\$39,801	\$47,320	-15.89%	\$196,821	\$248,665	-20.85%
	<i>Totals</i>	\$138,459	\$154,953	-10.64%	\$953,857	\$1,182,848	-19.36%

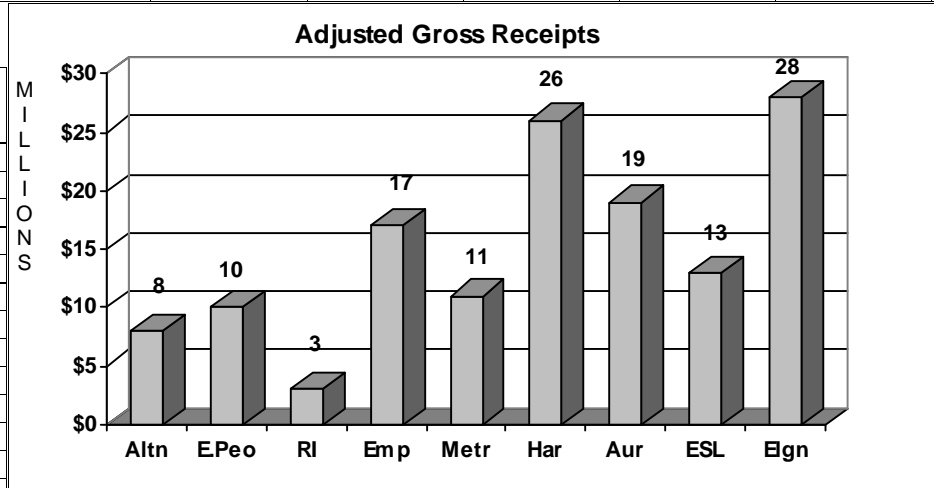
# ILLINOIS GAMING BOARD

## Docksite Detail August, 2008

	Alton	E. Peoria	Rock Island	Joliet Empress	Metropolis	Joliet Harrah's	Aurora	E.St. Louis	Elgin	Totals
AGR (000)'s	\$7,812	\$10,315	\$2,754	\$16,544	\$11,436	\$25,845	\$18,920	\$13,412	\$28,450	\$135,488
# Of Table Games *	18	24	12	22	27	23	27	34	31	218
Table Drop (000)'s	\$2,633	\$5,830	\$1,092	\$10,909	\$7,454	\$17,743	\$12,864	\$12,587	\$27,232	\$98,345
Table AGR (000)'s	\$520	\$898	\$187	\$1,517	\$1,405	\$3,053	\$2,685	\$1,866	\$4,566	\$16,697
AGR Per Table Per Day	\$931	\$1,207	\$503	\$2,225	\$1,679	\$4,282	\$3,208	\$1,770	\$4,751	\$2,471
Table AGR %	19.74%	15.41%	17.13%	13.91%	18.85%	17.21%	20.87%	14.82%	16.77%	16.98%
# Of EGD's *	1,100	1,129	730	1,194	1,129	1,188	1,172	1,122	1,138	9,902
EGD Handle (000)'s	\$114,574	\$116,620	\$38,659	\$182,181	\$93,949	\$267,402	\$196,581	\$205,590	\$356,126	\$1,571,683
EGD AGR (000)'s	\$7,292	\$9,417	\$2,567	\$15,027	\$10,031	\$22,792	\$16,235	\$11,547	\$23,884	\$118,791
AGR Per EGD Per Day	\$214	\$269	\$113	\$406	\$287	\$619	\$447	\$332	\$677	\$387
EGD AGR %	6.36%	8.07%	6.64%	8.25%	10.68%	8.52%	8.26%	5.62%	6.71%	7.56%
Admissions	104,218	126,019	54,572	154,630	101,086	220,196	137,872	206,293	193,026	1,297,912
Casino Square Feet	23,000	26,116	17,200	50,000	30,985	39,000	41,384	40,000	29,850	297,535
AGR Per Admission	\$75	\$82	\$50	\$107	\$113	\$117	\$137	\$65	\$147	\$104
AGR Per Square Foot	\$340	\$395	\$160	\$331	\$369	\$663	\$457	\$335	\$953	\$455
State Share of Taxes	\$1,966,572	\$2,832,212	\$329,839	\$5,674,834	\$3,345,470	\$11,237,400	\$6,723,199	\$4,599,246	\$13,197,472	\$49,906,244
Local Share of Taxes	\$494,914	\$641,662	\$192,205	\$980,102	\$672,594	\$1,511,002	\$1,083,826	\$876,004	\$1,616,517	\$8,068,826

\*Note Based on weighted average

Table Game	Number of Units*	Adjusted Gross Receipts
BlackJack / 21	120	\$7,460,642
Craps	22	\$3,545,538
Roulette	21	\$2,273,517
Big Six	0	\$0
Baccarat	1	\$166,211
Mini-Baccarat	9	\$411,757
Let It Ride	1	\$27,752
Let It Ride Bonus	1	\$15,151
Caribbean Stud Poker	8	\$527,961
Poker	11	\$568,754
Three Card Poker	18	\$1,430,169
Four Card Poker	1	\$21,406
Pai Gow Poker	2	\$91,347
Texas Hold-em Bonus	3	\$156,530
<b>Total</b>	<b>218</b>	<b>\$16,696,735</b>



EGD	Number of Units*	Adjusted Gross Receipts
1 Cent	1974	\$16,186,390
2 Cent	1516	\$22,357,176
3 Cent	22	\$278,911
5 Cent	1539	\$17,410,774
10 Cent	44	\$711,452
25 Cent	2121	\$22,616,031
50 Cent	226	\$2,502,916
\$1.00	2131	\$30,645,868
\$2.00	3	\$59,125
\$5.00	249	\$4,634,732
\$10.00	32	\$588,000
\$25.00	38	\$735,478
\$50.00	3	\$37,650
\$100.00	4	\$26,900
<b>Total</b>	<b>9902</b>	<b>\$118,791,403</b>

# ILLINOIS GAMING BOARD

## Monthly Riverboat Casino Report

August, 2008

### EGD AGR To Handle Percentages

	Alton		East Peoria		Rock Island		Joliet - Empress		Metropolis		Joliet - Harrah's		Aurora		E St Louis		Elgin		Totals	
	#EGD's	%	#EGD's	%	#EGD's	%	#EGD's	%	#EGD's	%	#EGD's	%	#EGD's	%	#EGD's	%	#EGD's	%	#EGD's	%
<b>1 Cent</b>	368	9.52%	499	11.06%	280	10.94%	48	11.61%	437	12.60%	16	15.25%	42	10.68%	284	9.65%			1974	10.76%
<b>2 Cent</b>	69	8.53%	61	11.50%	18	8.67%	371	12.20%	43	13.72%	311	11.83%	335	11.65%	52	8.65%	256	11.58%	1516	11.66%
<b>3 Cent</b>											22	12.80%							22	12.80%
<b>5 Cent</b>	167	6.44%	140	8.99%	159	7.69%	227	12.72%	73	10.70%	274	12.73%	181	12.15%	156	7.04%	162	11.03%	1539	10.45%
<b>10 Cent</b>							4	4.51%			1	9.10%	9	5.36%	4	5.61%	26	10.26%	44	7.82%
<b>25 Cent</b>	231	5.03%	219	6.64%	152	4.35%	238	5.94%	265	10.32%	255	5.94%	227	7.36%	314	4.64%	220	7.21%	2121	6.25%
<b>50 Cent</b>	33	6.58%	3	10.48%	12	3.96%	27	6.06%	36	9.95%	8	14.42%	36	9.14%	24	4.87%	47	8.38%	226	7.59%
<b>\$1.00</b>	200	4.52%	169	6.22%	96	4.43%	252	6.43%	245	8.83%	267	6.85%	311	6.02%	246	4.19%	345	5.22%	2131	5.82%
<b>\$2.00</b>														1	4.14%	2	20.43%	3	5.06%	
<b>\$5.00</b>	24	4.59%	29	4.69%	11	3.62%	19	5.05%	19	7.88%	29	6.43%	25	5.76%	34	3.43%	59	3.75%	249	4.50%
<b>\$10.00</b>	4	6.20%	5	7.80%			4	3.88%	5	9.96%	1	11.07%			1	0.59%	12	5.49%	32	6.61%
<b>\$25.00</b>	4	4.90%	4	6.33%	2	-2.51%	3	0.73%	6	16.33%	3	8.57%	6	1.94%	4	0.74%	6	9.77%	38	5.54%
<b>\$50.00</b>														2	1.06%	1	6.73%	3	1.18%	
<b>\$100.00</b>							1	-1.11%			1	6.20%					2	2.91%	4	3.44%

### Table AGR To Drop Percentages

	Alton		East Peoria		Rock Island		Joliet - Empress		Metropolis		Joliet - Harrah's		Aurora		E St Louis		Elgin		Totals	
	#Tables	%	#Tables	%	#Tables	%	#Tables	%	#Tables	%	#Tables	%	#Tables	%	#Tables	%	#Tables	%	#Tables	%
<b>BlackJack / 21</b>	10	19.82%	14	10.65%	7	12.93%	11	7.00%	15	14.62%	12	14.75%	15	17.60%	19	10.09%	17	14.49%	120	13.47%
<b>Craps</b>	2	20.77%	2	19.66%	1	19.74%	2	18.24%	2	28.90%	3	19.51%	2	19.08%	4	26.23%	4	16.65%	22	20.12%
<b>Roulette</b>	2	22.39%	2	22.85%	1	19.90%	2	28.04%	1	17.22%	2	25.01%	3	27.67%	4	25.38%	4	24.68%	21	24.99%
<b>Baccarat</b>																	1	19.12%	1	19.12%
<b>Mini-Baccarat</b>			1	2.42%			1	6.21%	2	22.27%	1	7.96%			3	17.75%	1	11.28%	9	11.64%
<b>Let It Ride</b>			1	16.05%															1	16.05%
<b>Let It Ride Bonus</b>									1	7.60%									1	7.60%
<b>Caribbean Stud P</b>	1	39.18%	1	28.61%	1	41.90%	1	28.42%			1	23.19%	1	24.39%	1	27.05%	1	18.15%	8	24.35%
<b>Three Card Poke</b>	2	14.66%	2	21.16%	1	27.74%	2	26.45%	2	26.26%	3	24.54%	1	26.10%	2	15.58%	3	21.01%	18	22.43%
<b>Four Card Poker</b>	1	15.98%																	1	15.98%
<b>Pai Gow Poker</b>													1	28.39%	1	4.64%			2	19.47%
<b>Texas Hold-em B</b>			1	36.73%	1	26.60%					1	25.47%							3	28.52%

Note: Poker has been excluded from this report. Because poker is competition between patrons, the table AGR to drop percent is not a relevant comparison.